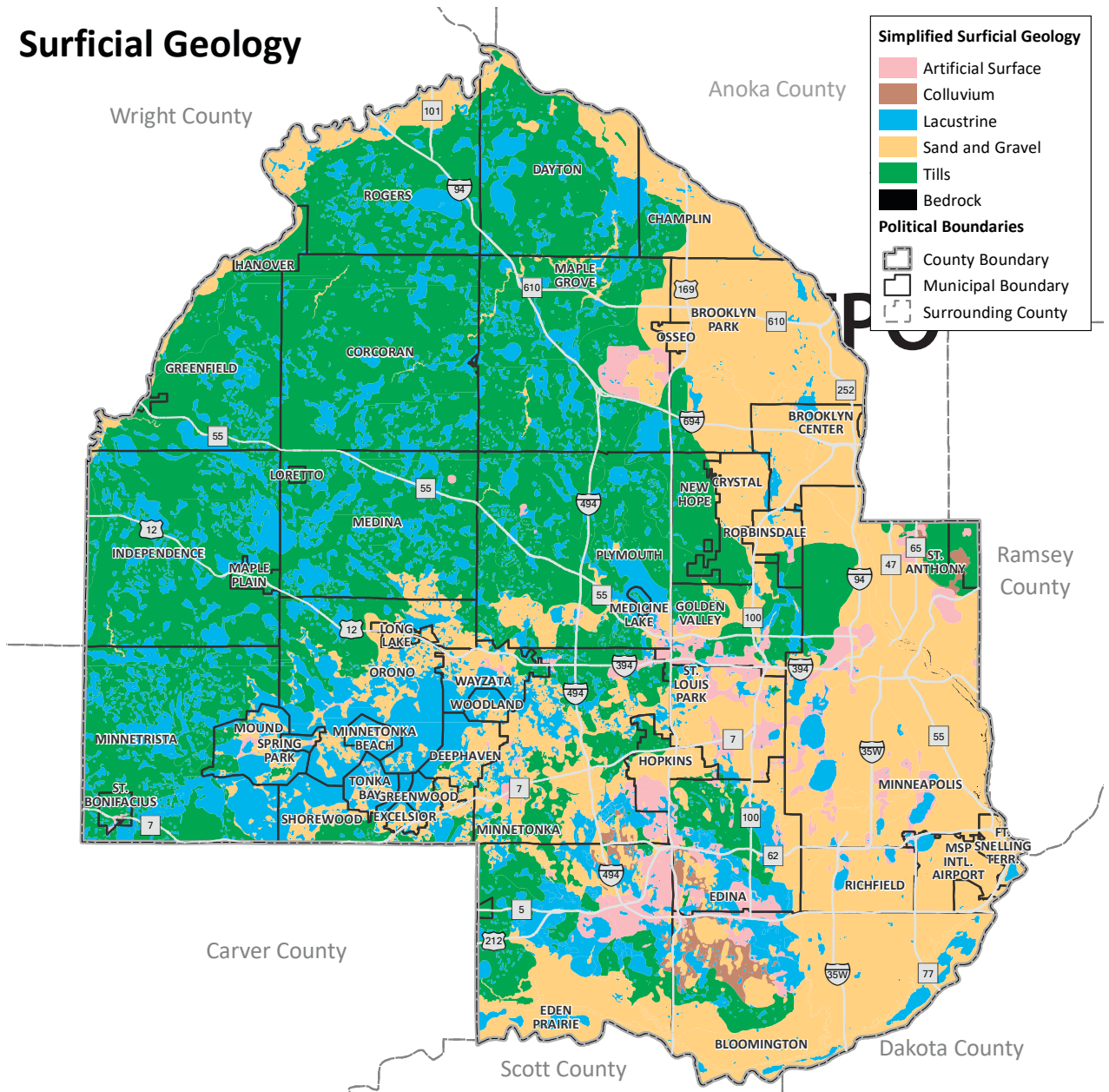


Figure 17-5: Surficial Geology

Surficial Geology

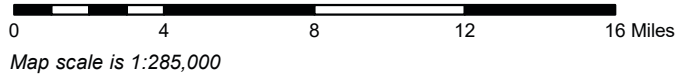
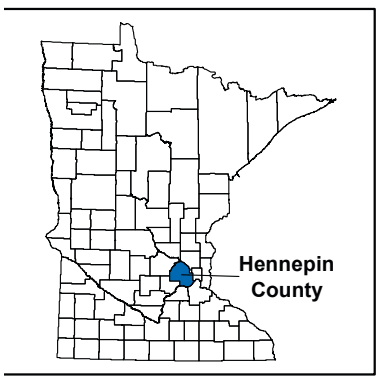


Simplified Surficial Geology

- Artificial Surface
- Colluvium
- Lacustrine
- Sand and Gravel
- Tills
- Bedrock

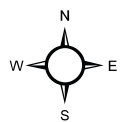
Political Boundaries

- County Boundary
- Municipal Boundary
- Surrounding County



Disclaimer: This map (i) is furnished "AS IS" with no representation as to completeness or accuracy; (ii) is furnished with no warranty of any kind; and (iii) is not suitable for legal, engineering or surveying purposes. Hennepin County shall not be liable for any damage, injury or loss resulting from this map.

Data Sources: Hennepin County, MN Geological Survey



Hennepin County
 Emergency Management

