



HENNEPIN COUNTY  
MINNESOTA



# Recycling and why it is important

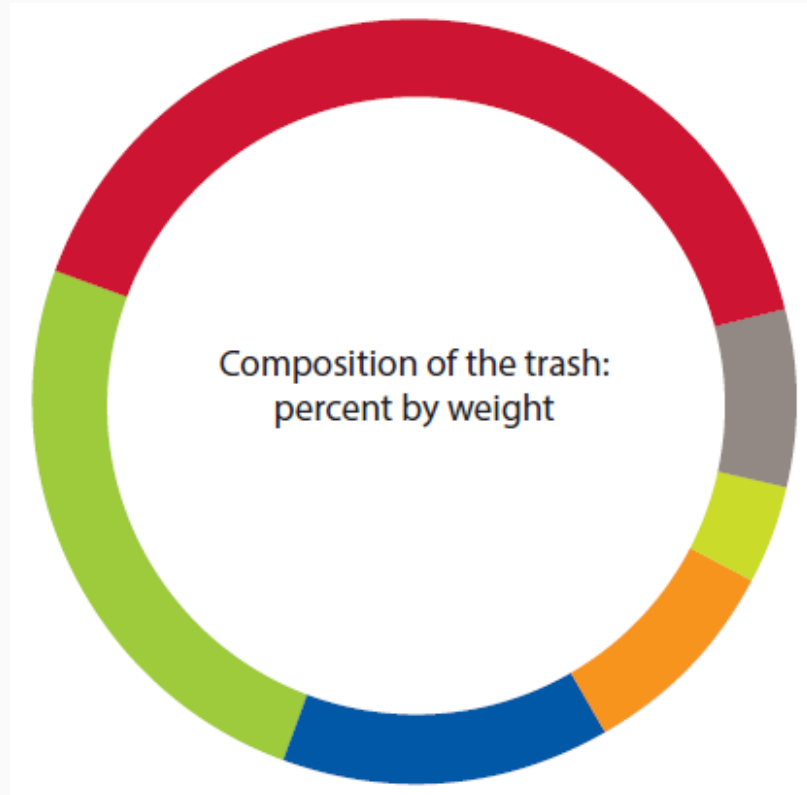
An elementary school presentation

# Reducing waste

- On average, each resident of Hennepin County creates **6** pounds of waste per day.
- Add up all the waste created in the county in a year and it's enough to fill Target Field more than **11** times.



# What's in the trash?



# Negative Impacts of Trash?

- Pollution
- Loss of precious natural resources
- Impact on ecosystems
- Loss of habitat





So what can we do?

# Reduce and Reuse

## High Waste Options

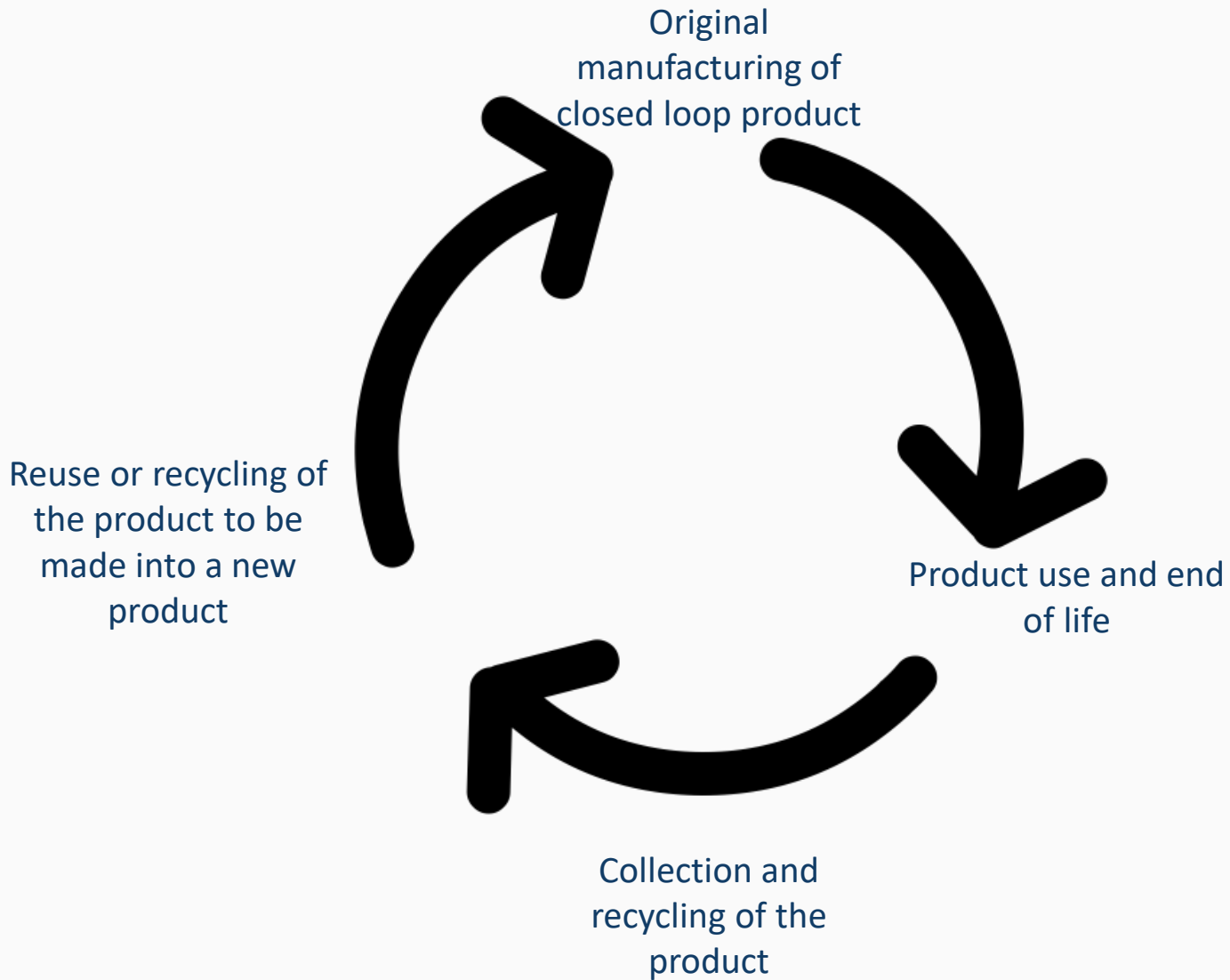


## Low Waste Options





# Recycling







# Natural Resources

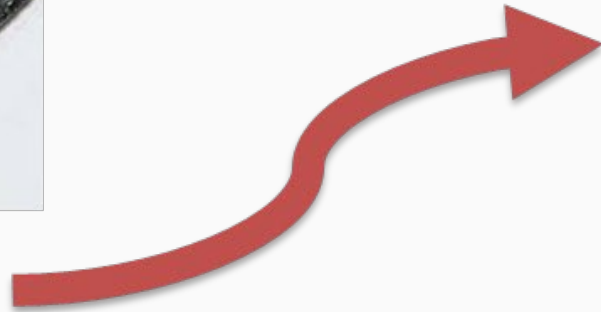


 Trees

 Sand

 Oil

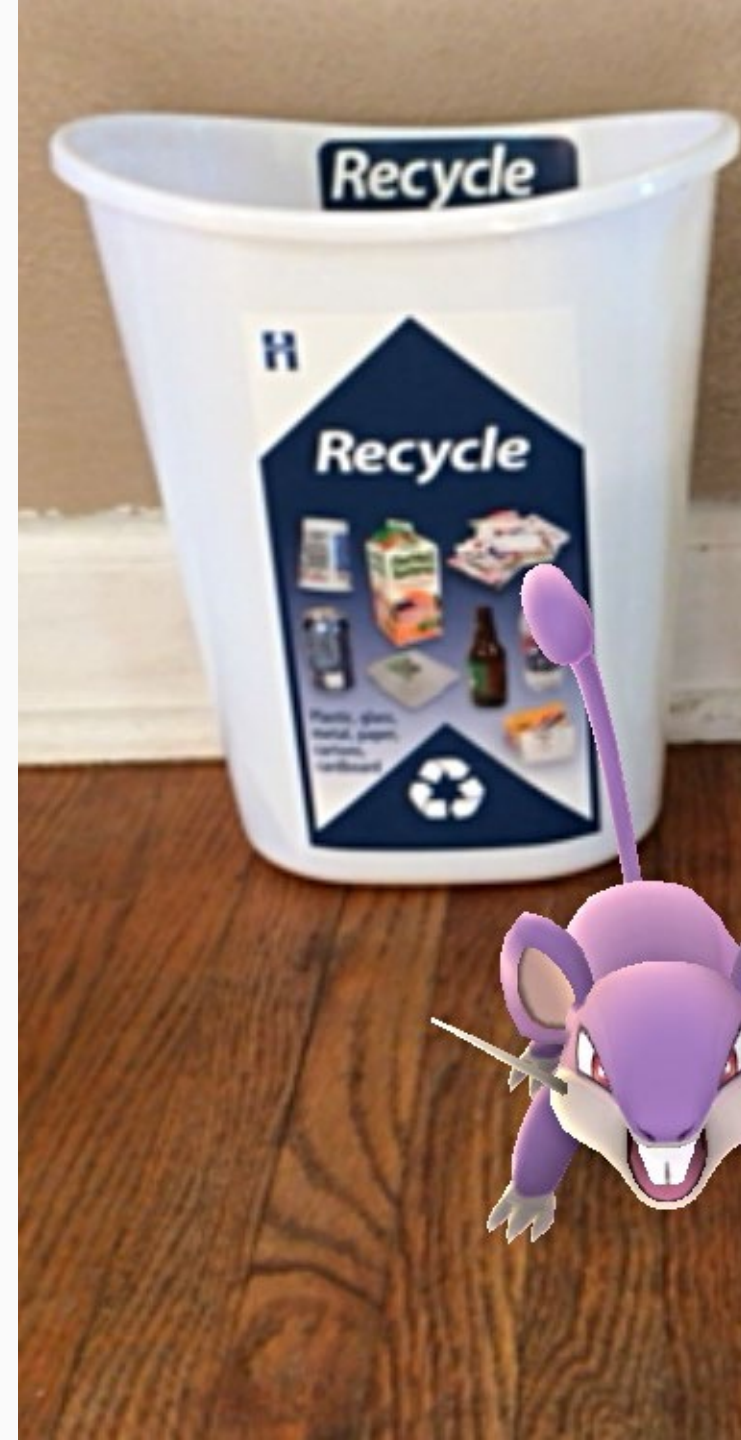
 Ore





# Benefits of Recycling

- Less energy needed to make new products
- Less pollution created
- Less impact on the environment
- Fewer natural resources are required
- Creates lots of jobs





What can you recycle?

# Paper Recycling

## YES

- ✓ Office paper
- ✓ Magazines & catalogs
- ✓ Newspapers
- ✓ Cardboard
- ✓ Boxes



## NO

- x Food-soiled paper
- x Paper plates & cups
- x Pizza boxes
- x Paper towels, napkins, tissues
- x Frozen food boxes

# Glass

## YES

- ✓ Food and beverage jars
- ✓ Food and beverage bottles



## NO

- x Drinking glasses
- x Dishes
- x Mirrors
- x Windows

# Metal

YES

- ✓ Food and beverage cans
- ✓ Balled aluminum foil
- ✓ Metal lids



NO

- x Cans for hazardous materials

# Plastic

## YES

- ✓ Bottles
- ✓ Jugs
- ✓ Cups
- ✓ Containers
- ✓ Clear packaging
- ✓ Lids on!



## NO

- x Styrofoam
- x Plastic wrap
- x Plastic bags
- x Candy wrappers, chip bags, juice pouches



# Cartons

**YES**

- ✓ Juice boxes
- ✓ Milk cartons
- ✓ Soup and broth cartons



Questions?

