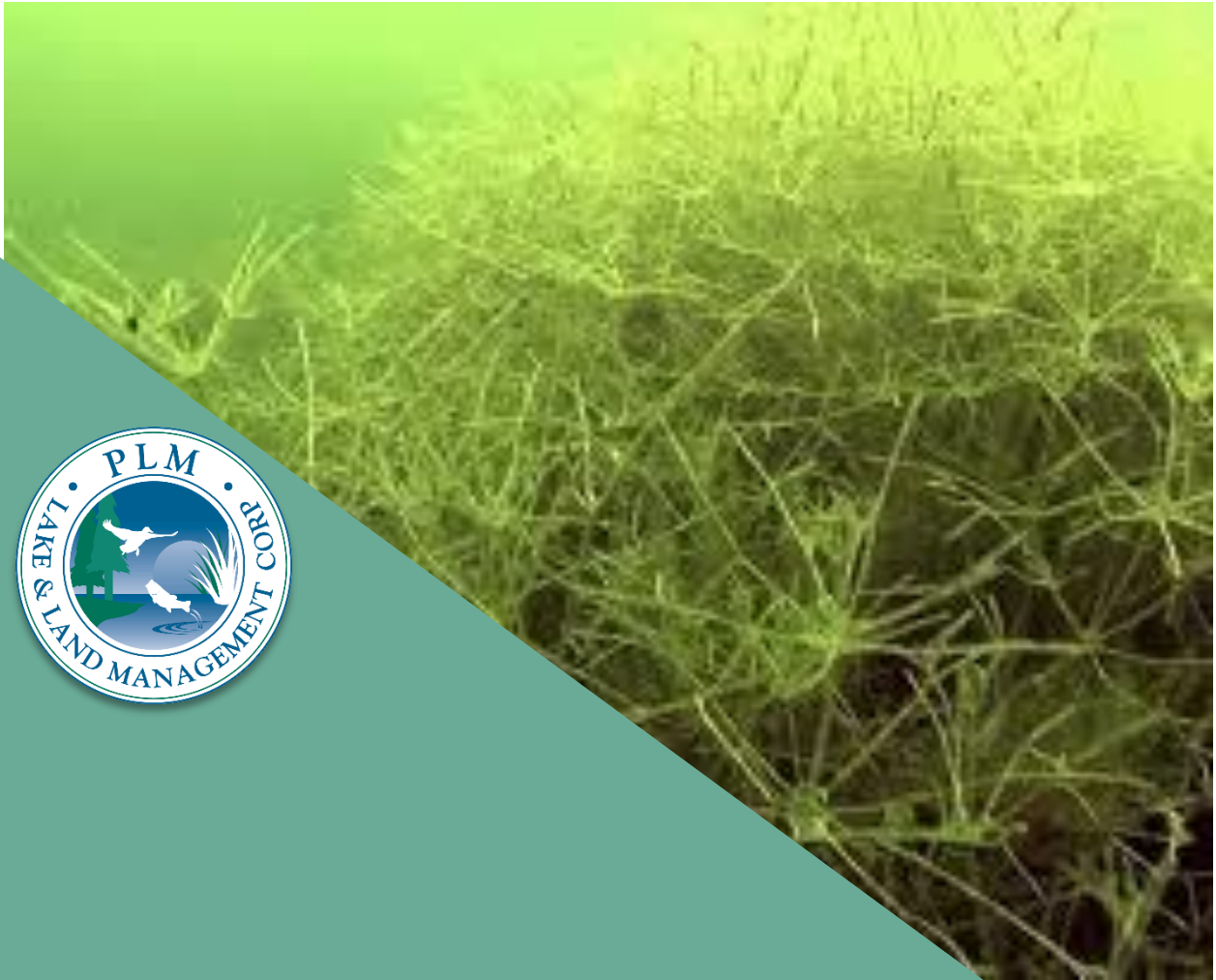


Lake Minnetonka Access Site Survey for Starry Stonewort- 2023



**PLM Lake & Land
Management Corp
January 15, 2024
Patrick Selter, V. P.**



LAKE
MINNETONKA
ASSOCIATION

Summary of the surveys and results

Background

The Lake Minnetonka Association (LMA) has been actively managing Aquatic Invasive Species (AIS) in Lake Minnetonka located in Hennepin county, Minnesota. Recently, Starry Stonewort was discovered in nearby Medicine Lake roughly four miles northeast of Lake Minnetonka. As part of these efforts, the LMA has contracted PLM Lake & Land Management Corp. to survey the most heavily used access sites for Starry Stonewort.



Method

In Late Summer and Fall, PLM conducted surveys of all the sites identified. At each landing, visual inspections as well as rake tosses were used to determine the presence of Starry Stonewort, as well as other species present. In addition to the access sites and as part of PLM's services, over **1700** other sites were surveyed in 2023.

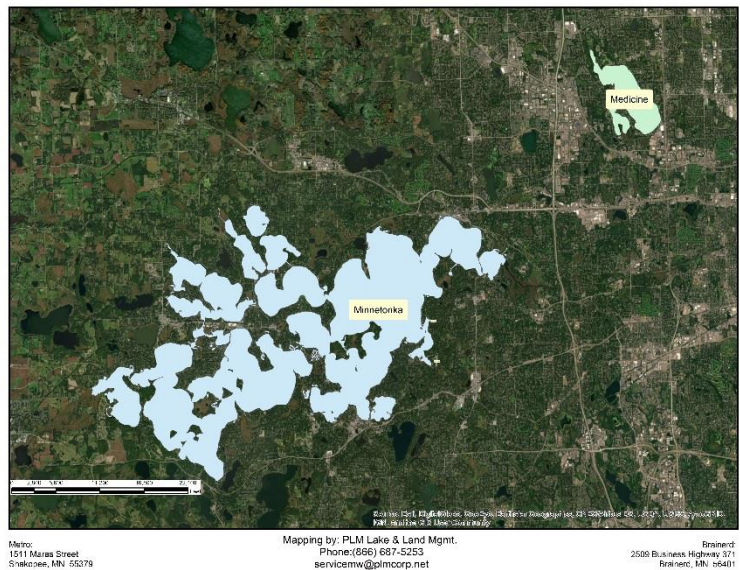
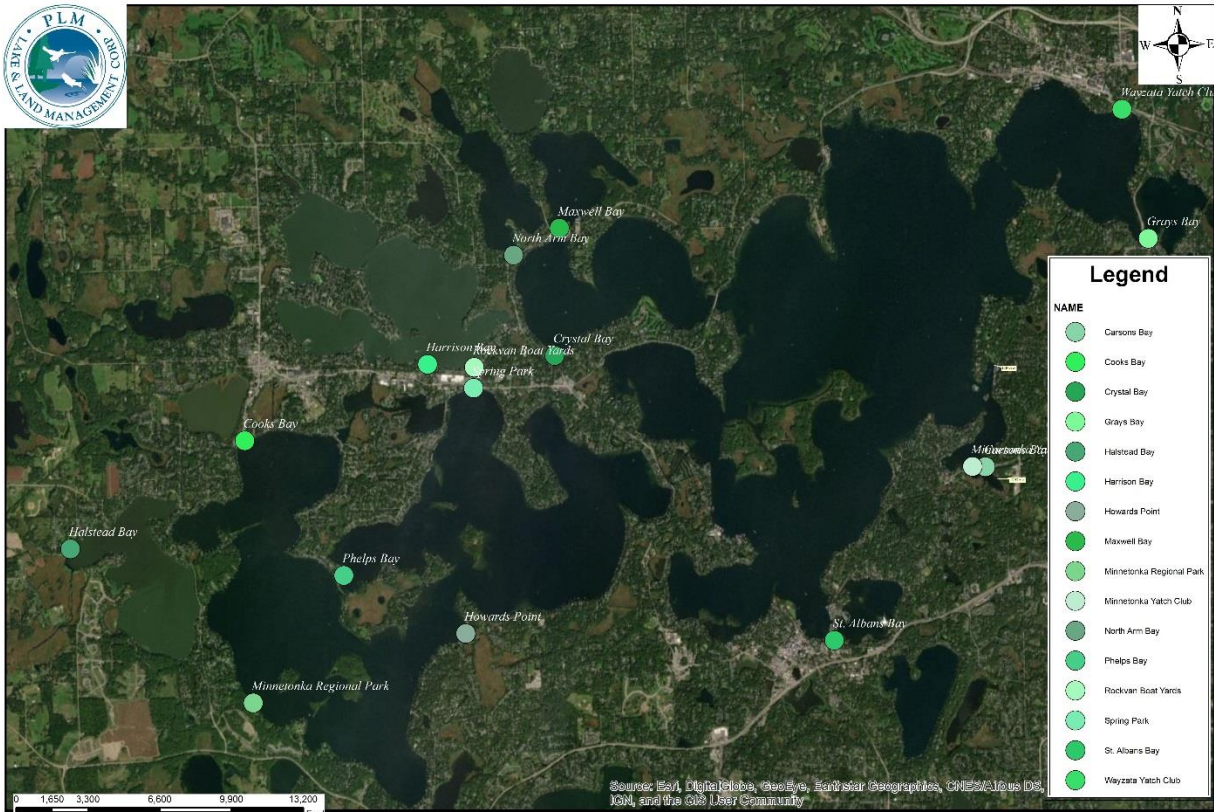


Figure 1 location of Medicine lake proximity to Lake Minnetonka

Access Sites Surveyed



Project Name: Starry Stonewort Inspections	Resource: Minnetonka	County: Hennepin	Watershed: Minnehaha Creek
--	--------------------------------	----------------------------	--------------------------------------

Metro:
1511 Maras Street
Shakopee, MN 55379

Mapping by: PLM Lake & Land Mgmt.
Phone: (866) 687-5253
servicemw@plmcorp.net

Brainerd:
2509 Business Highway 371
Brainerd, MN 56401

In total 16 Access sites were selected to be surveyed. There were 7 public access sites, 4 working access sites and 5 private access sites.

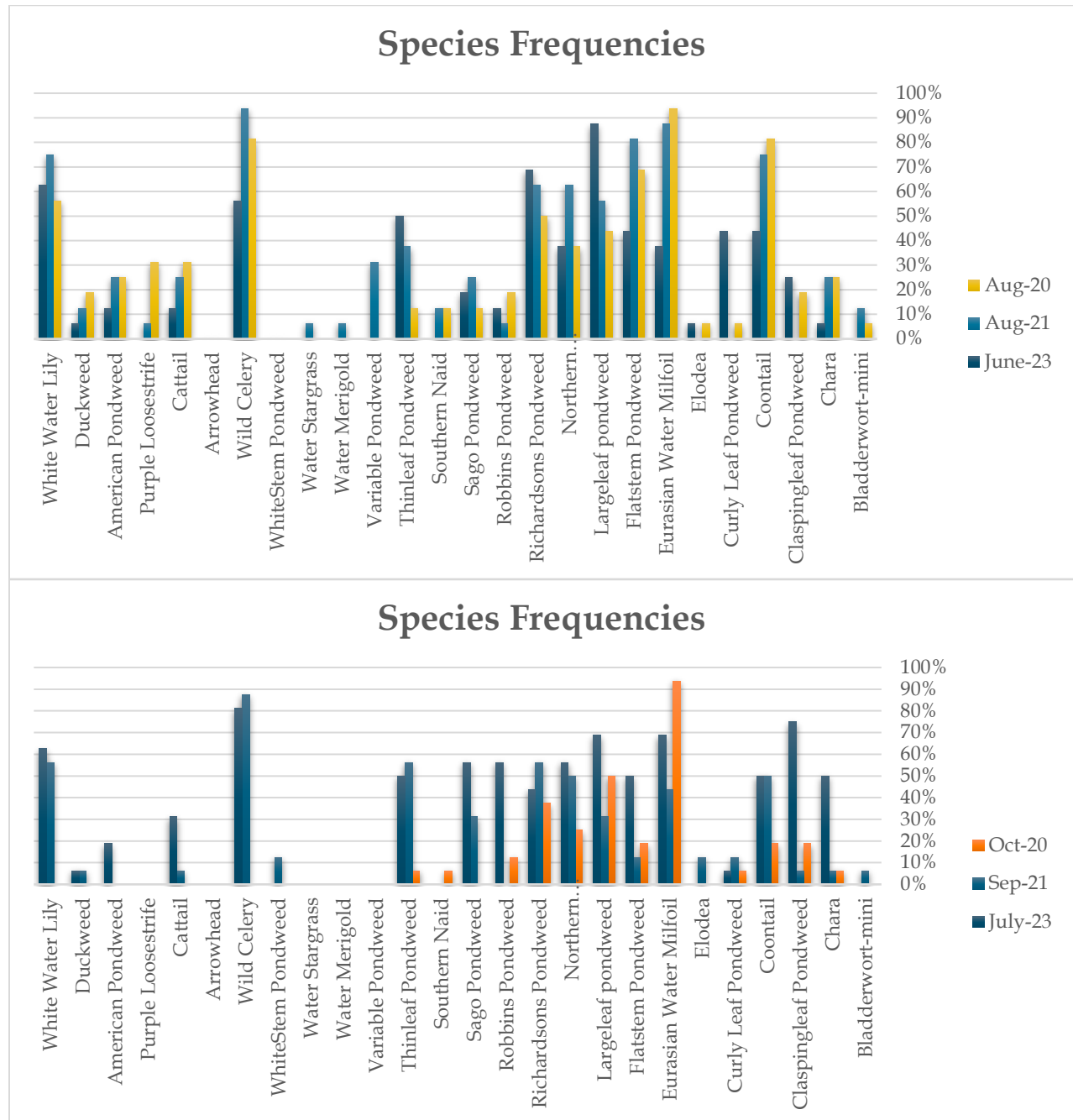
Public Access sites	Working Access Sites	Private Access Sites
Grays Bay	Halstead Bay	Howards Point Marina
Carsons Bay	Phelps Bay	Rockvan Boat Yards
North Arm Bay	Crystal Bay	St. Albans Bay
Maxwell Bay	Harrisons Bay	Minnetonka Yacht Club
Spring Park Bay		Wayzata Yacht Club
Minnetonka Regional Park		
Cooks Bay		

Results

Starry Stonewort was not found in either of the surveys conducted in 2023.

Summer Surveys

The late summer survey was conducted and at each site species present were recorded. The below table shows the frequency of occurrence of each species found.

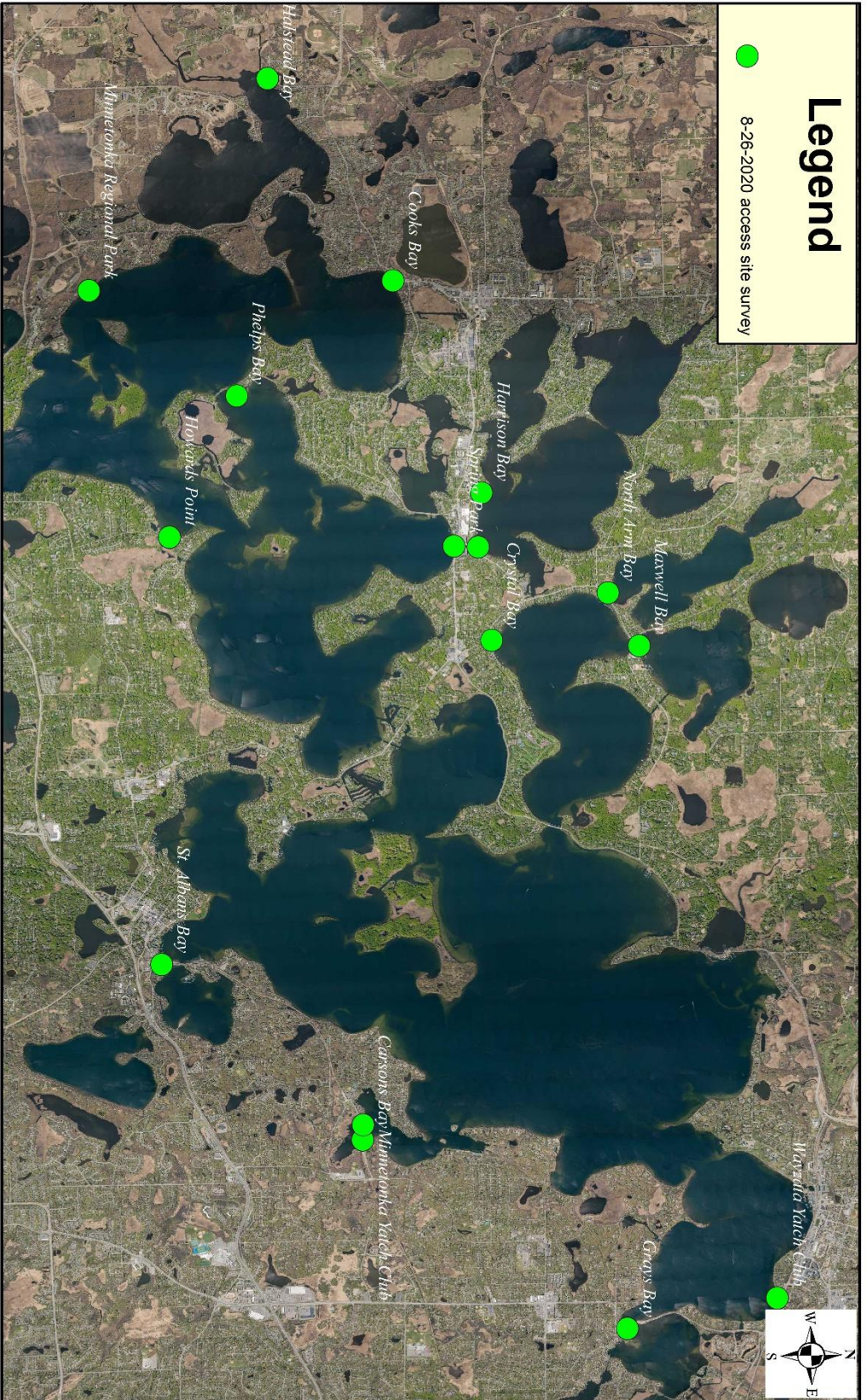


Late Summer Survey

The late summer survey was conducted and at each site species present were recorded. The above table shows the frequency of occurrence of each species found.

Legend

● 8-26-2020 access site survey



Project Name:
Minnetonka Assoc, Access Site

County:
Hennepin

Metro:
1511 Maras Street
Shakopee, MN 55379

Mapping by: PLM Lake & Land Mgmt.
Phone:(866) 687-5253
serv@plmcorp.net

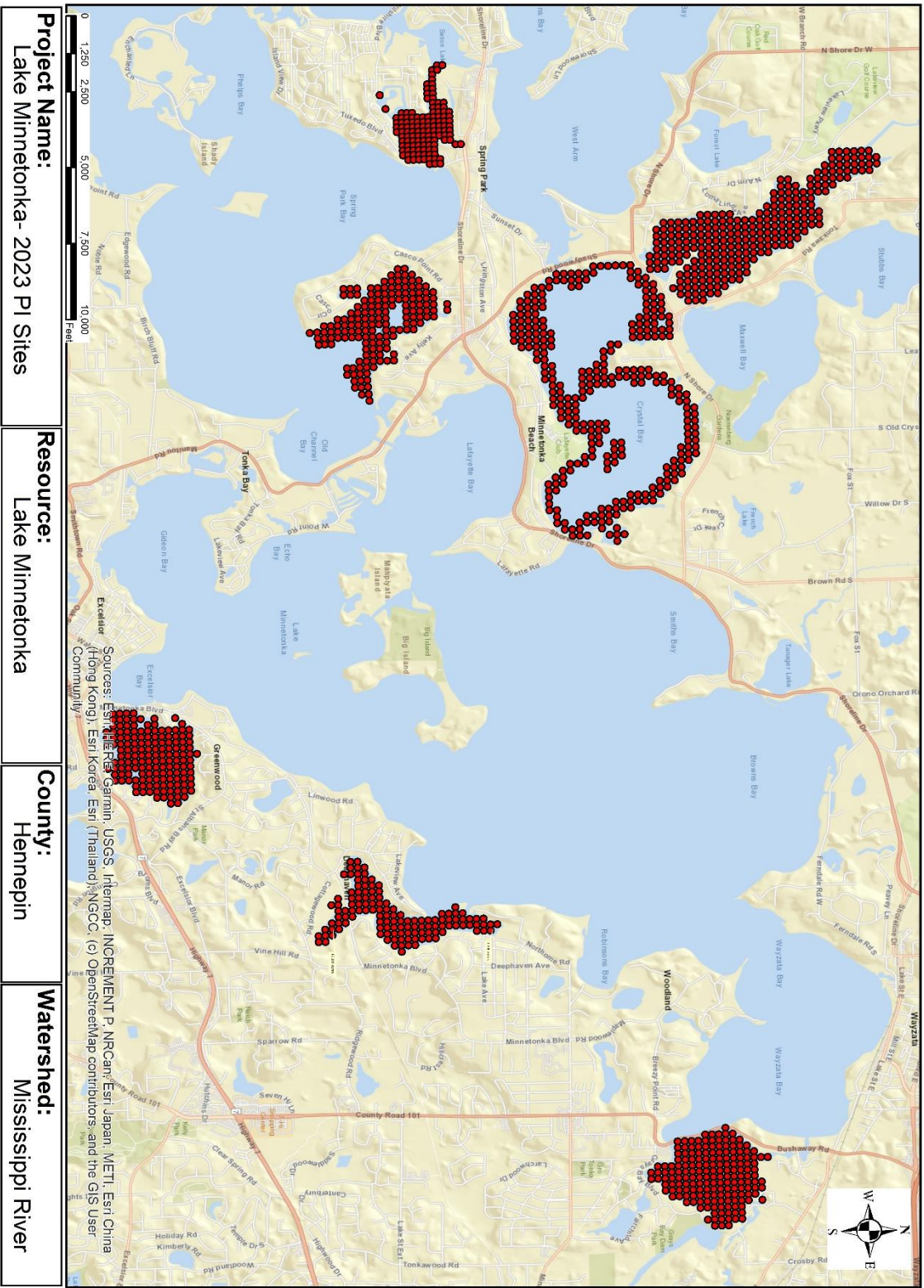


Resource:
Minnetonka-Lower Lake (27013302)

Watershed:
Mississippi River - Twin Cities

Brainerd:
2509 Business Highway 371
Brainerd, MN 56401

Point Intercept Sites inspected in July



Project Name:
Lake Minnetonka- 2023 PI Sites

Resource:
Lake Minnetonka

County:
Hennepin

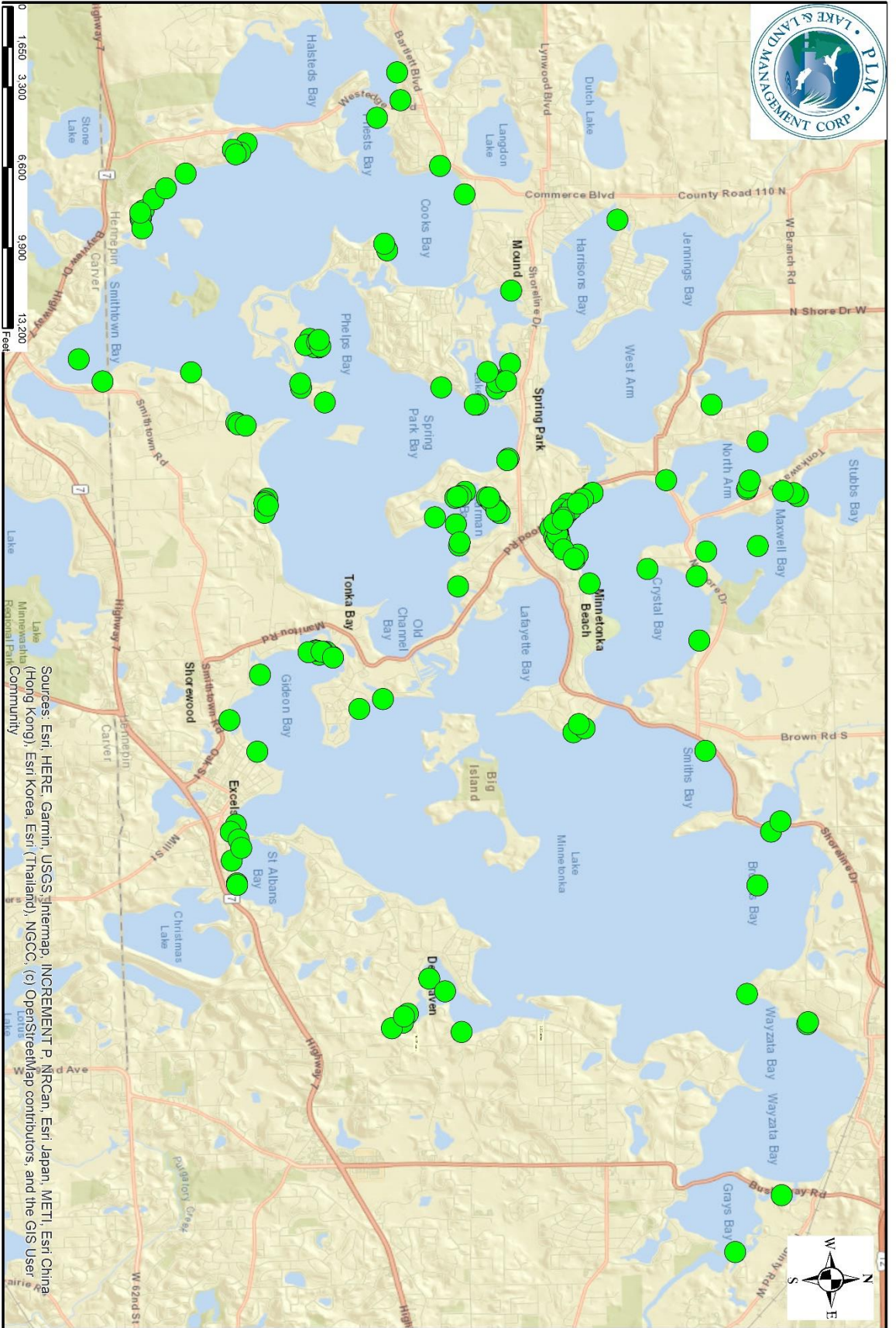
Watershed:
Mississippi River

Metro:
1511 Maras Street
Shakopee, MN 55379

Mapping by: PLM Lake & Land Mgmt.
Phone: (866) 687-5253
service@plmcorp.net

Brainerd:
2509 Business Highway 371
Brainerd, MN 56401

Sources: Esri, DeLorme, Garmin, USGS, Intermap, INCREMENT P, NRCan, Esri Japan, METI, Esri China (Hong Kong), Esri Korea, Esri (Thailand), NGCC, (c) OpenStreetMap contributors, and the GIS User Community



Project Name:
Lake Minnetonka Private

Resource:
Lake Minnetonka

County:
Hennepin

Watershed:
Mississippi River

Metro:
1511 Maras Street
Shakopee, MN 55379

Mapping by: PLM Lake & Land Mgmt.
Phone: (866) 687-5253
servicemw@plmcorp.net

Brainerd:
2509 Business Highway 371
Brainerd, MN 56401

Sources: Esri, HERE, Garmin, USGS, Intermap, INCREMENT P, NRCan, Esri Japan, METI, Esri China (Hong Kong), Esri Korea, Esri (Thailand), NGCC, (c) OpenStreetMap contributors, and the GIS User Community